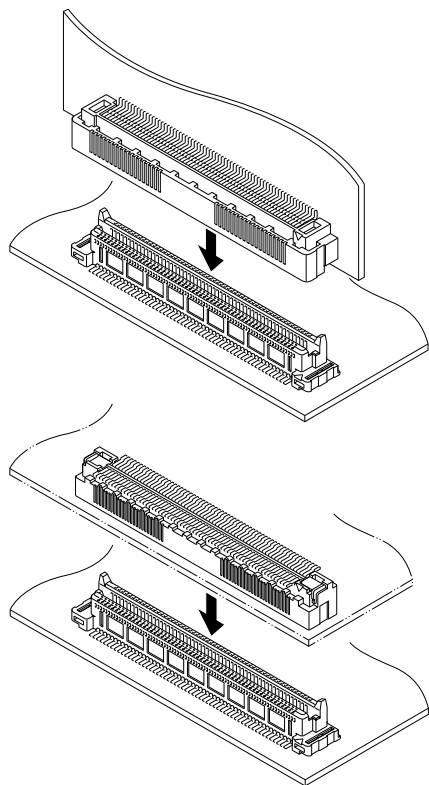


# JUX CONNECTOR

0.6mm pitch/Board-to-board connectors



**This connector is small 0.6mm pitch double-row board-to-board connector for high density mounting.**  
**This plug is available in top and side entry type to choose either connection type depending on its usage.**

- With guide system for mating
- Outstanding click feeling when mating
- Space saving
- Vertical and horizontal mounting

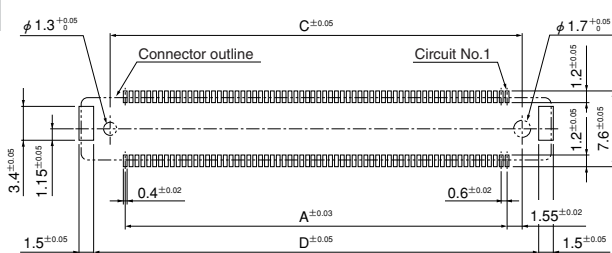
## Specifications

- Current rating: 0.5A AC, DC
- Voltage rating: 50V AC, DC
- Temperature range: -25°C to +85°C  
(including temperature rise in applying electrical current)
- Contact resistance: Initial value/50m Ω max.  
After environmental testing/100m Ω max.
- Insulation resistance: 50M Ω min.
- Withstanding voltage: 100V AC/minute
- Applicable PC board thickness: 1.6mm max.
- \* Compliant with RoHS.
- \* Refer to "General Instruction and Notice when using Terminals and Connectors" at the end of this catalog.
- \* Contact JST for details.

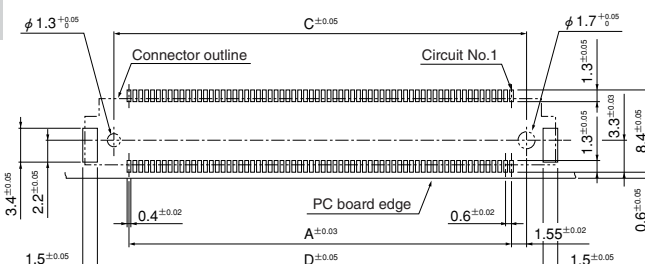
## PC board layout (viewed from component side)

### Plug

#### Top entry type

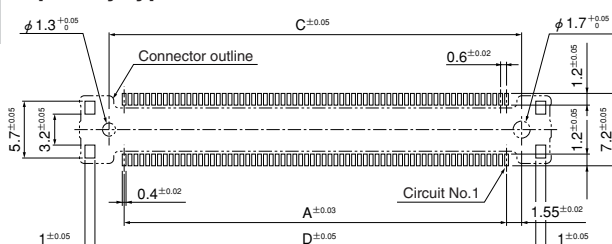


#### Side entry type



### Receptacle

#### Top entry type

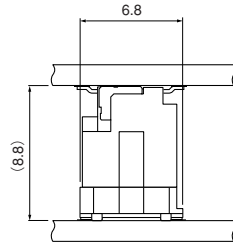


Circuits	Plug						Receptacle		
	Top entry type			Side entry type			Top entry type		
	A	C	D	A	C	D	A	C	D
52	—	—	—	15.0	18.1	21.5	15.0	18.1	20.9
140	41.4	44.5	47.9	41.4	44.5	47.9	41.4	44.5	47.3

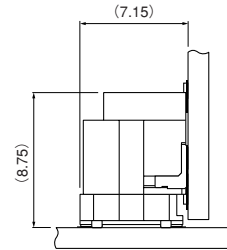
Note: 1. Tolerances are non-cumulative:  $\pm 0.03\text{mm}$  for all centers.  
 2. The dimensions above should serve as a guideline. Contact JST for details.

## Assembly layout

### Top entry type

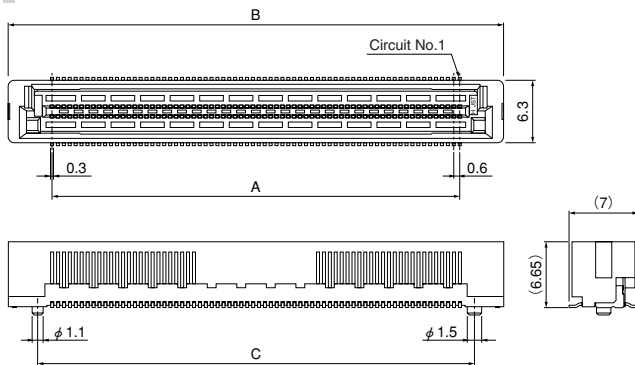


### Side entry type

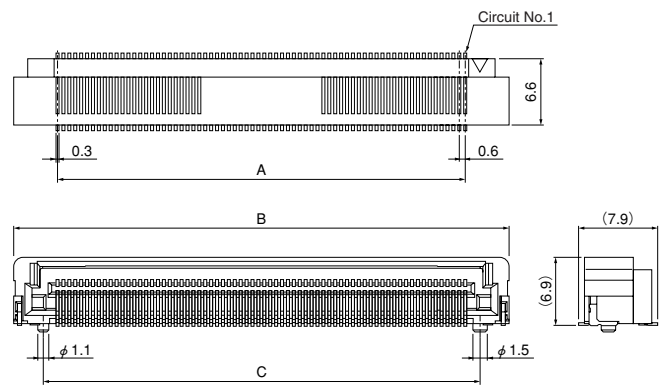


## Plug

### Top entry type



### Side entry type



### Top entry type

Circuits	Model No.		Dimensions (mm)			Q'ty / box
	With boss	Without boss	A	B	C	
140	140P-JUXK-G-B- (*)	140P-JUXK-G- (*)	41.4	50.4	44.5	630

#### Material and Finish

Contact: Copper alloy, nickel-undercoated, gold-plated  
Housing: LCP, UL94V-0, black  
Solder tab: Copper alloy, copper-undercoated, tin-plated (reflow treatment)

**RoHS compliance** This product displays (LF)(SN) on a label.

Note: Products with suction tape are also available.

(\*) : None ... Without suction tape

T ... With suction tape

### Side entry type

Circuits	Model No.		Dimensions (mm)			Q'ty / box
	With boss	Without boss	A	B	C	
52	52PS-JUXK-G-B	52PS-JUXK-G	15.0	24.0	18.1	1,134
140	140PS-JUXK-G-B	140PS-JUXK-G	41.4	50.4	44.5	630

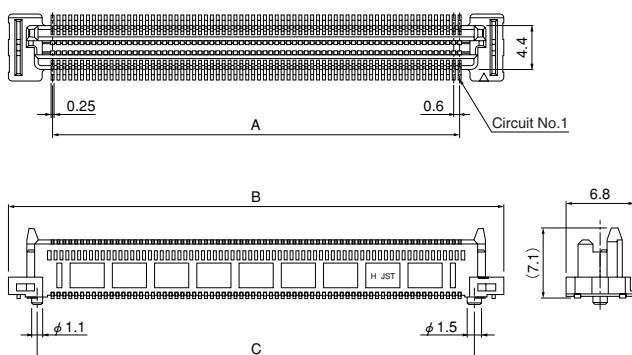
#### Material and Finish

Contact: Copper alloy, nickel-undercoated, gold-plated  
Housing: LCP, UL94V-0, black  
Solder tab: Copper alloy, copper-undercoated, tin-plated (reflow treatment)

**RoHS compliance** This product displays (LF)(SN) on a label.

## Receptacle

### Top entry type



Circuits	Model No.		Dimensions (mm)			Q'ty / box
	With boss	Without boss	A	B	C	
52	52R-JUXK-G-B- (*)	52R-JUXK-G- (*)	15.0	24.0	18.1	1,134
140	140R-JUXK-G-B- (*)	140R-JUXK-G- (*)	41.4	50.4	44.5	630

#### Material and Finish

Contact: Copper alloy, nickel-undercoated, gold-plated  
Housing: LCP, UL94V-0, black  
Solder tab: Copper alloy, copper-undercoated, tin-plated (reflow treatment)

**RoHS compliance** This product displays (LF)(SN) on a label.

Note: Products with suction tape are also available.

(\*) : None ... Without suction tape

T ... With suction tape